

# Mapping of Urban Tanks / Rivers and it's Changes

## Srikakulam Urban Local Body, Srikakulam District, Andhra Pradesh



### Source:

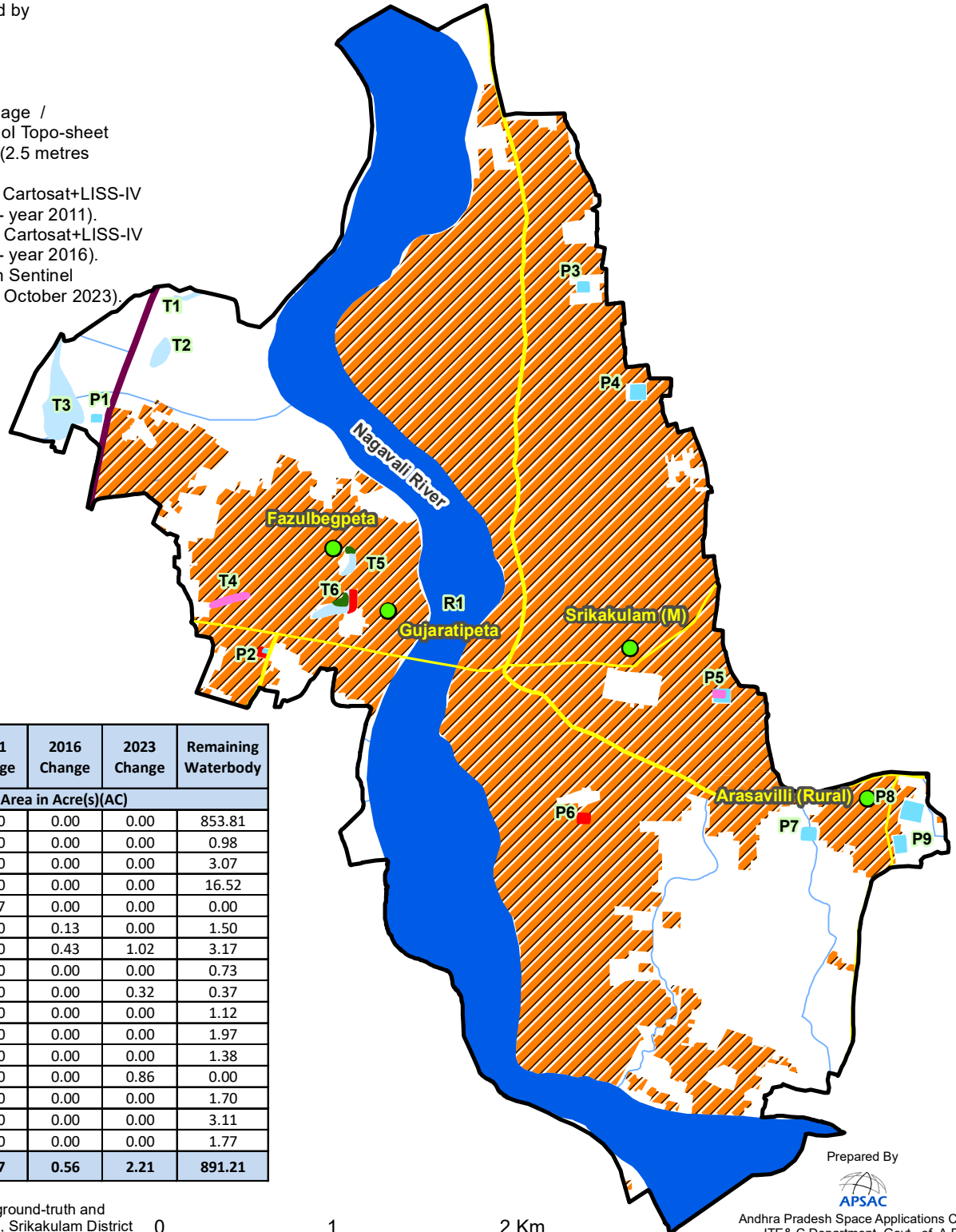
1. Urban Local Body Boundary provided by the Commissioner and Director of Municipal Administration, GoAP.

### Data used:

2. Tank / Lake / River / Reservoir / Drainage / Canal boundary digitized based on Sol Topo-sheet and Cartosat+LISS-IV Satellite Data (2.5 metres resolution) year 2011.
3. Changes of 2011 digitized based on Cartosat+LISS-IV Satellite Data (2.5 metres resolution - year 2011).
4. Changes of 2016 digitized based on Cartosat+LISS-IV Satellite Data (2.5 metres resolution - year 2016).
5. Changes of 2023 digitized based on Sentinel Satellite Data (10 metres resolution - October 2023).

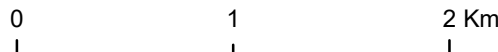
### Legend

- Habitation
- National Highway
- State Highway
- District Road
- Drainage
- 2011 Change
- 2016 Change
- 2023 Change
- Settlement
- R1 River
- T1 Tank
- P1 Pond
- Urban Local Body



S.No	Waterbody Name (Refer Map)	Total Waterbody	2011 Change	2016 Change	2023 Change	Remaining Waterbody
1	River (R1)	853.81	0.00	0.00	0.00	853.81
2	Tank (T1)	0.98	0.00	0.00	0.00	0.98
3	Tank (T2)	3.07	0.00	0.00	0.00	3.07
4	Tank (T3)	16.52	0.00	0.00	0.00	16.52
5	Tank (T4)	1.67	1.67	0.00	0.00	0.00
6	Tank (T5)	1.63	0.00	0.13	0.00	1.50
7	Tank (T6)	4.63	0.00	0.43	1.02	3.17
8	Pond (P1)	0.73	0.00	0.00	0.00	0.73
9	Pond (P2)	0.69	0.00	0.00	0.32	0.37
10	Pond (P3)	1.12	0.00	0.00	0.00	1.12
11	Pond (P4)	1.97	0.00	0.00	0.00	1.97
12	Pond (P5)	1.88	0.50	0.00	0.00	1.38
13	Pond (P6)	0.86	0.00	0.00	0.86	0.00
14	Pond (P7)	1.70	0.00	0.00	0.00	1.70
15	Pond (P8)	3.11	0.00	0.00	0.00	3.11
16	Pond (P9)	1.77	0.00	0.00	0.00	1.77
<b>Grand Total</b>		<b>896.15</b>	<b>2.17</b>	<b>0.56</b>	<b>2.21</b>	<b>891.21</b>

Note: This map and contents required to be ground-truth and vetted by the Collector and District Magistrate, Srikakulam District and the Departments.



Prepared By



Andhra Pradesh Space Applications Centre  
ITE & C Department, Govt., of A.P.  
Vijayawada - 520010